

HM600

WIDE AREA MULCHING FLAIL MOWER

THE PERFECT SOLUTION TO LARGE-SCALE MOWING

The HM600 was designed in collaboration with Müthing® for tackling the toughest jobs and creating pristine turf, it's patented shredding technology uses the internal shredding bars to cut the grass until its in a fine form, allowing it to break down quickly and even the level of turf. Combined with its ability to maneuver in tight spaces, it is an excellent choice for large scale maintenance.



TILT SENSORY TECHNOLOGY

ISO PLATFORM TO
REDUCE VIBRATIONS

INDUSTRY EXCLUSIVE
BATWING FLAIL

CUT WIDTH

126"
(3.2M)

CUT HEIGHT

1.2" - 2.8"
(30MM - 70MM)
0.2" (5MM)
INCREMENTS

CUTTING CAPACITY

8.5^{AC}
(3.46HA) / HR
AT 7.5MPH (12KM/H)

FUEL CAPACITY

20.4^{GAL}
(77.1L)

MOWER ENGINE

KUBOTA
62.5HP
(48.6KW) TURBODIESEL

TRANSPORT SPEED

15^{MPH}
(25KPH)

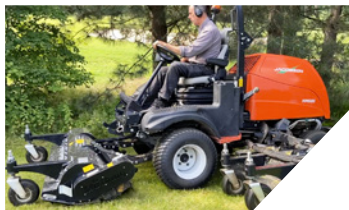


JACOBSEN

Actual operating power output may vary due to conditions of specific use.
Run time will vary based on conditions of specific use, accessories, and terrain.
NOTE: Specifications, while correct at time of printing, may change without notice.
© 2025 Textron Specialized Vehicles Inc. 10034-G2 (Rev. 01/2025)

HM600

WIDE AREA MULCHING FLAIL MOWER



The Mütthing® flails are designed for heavy-duty use, providing reliable performance and longevity even under tough mowing conditions.



A short wheel base allows the HM600 to run smoothly over contours, hugging the ground and creating a superior aftercut finish.



The hydrostatic, automatic on-demand cross-flow 4WD system provides excellent maneuverability and superior stability.



DECKS & CUTTING UNITS

CUTTING UNITS	Batwing mower with independent Mütthing® mulching flail units. 1 out-front and 2 wing units
NUMBER AND SIZE	1 x 63" (1.6m) front flail unit, 2 x 39" (1.0m) wing flails; 12.5" (300mm) working diameter
BLADE MATERIAL	M Type heavy duty carbide flails with shark fin shredding bar for optimum spread and mulching of clippings. High strength structural steel hood with replaceable wear plate. Spring steel projectile guards. Bolt-on carbide wear skids.
DECK LIFT & LOWER	Individual via fingertip operated joysticks
CUTTING UNIT CONTROLS	Fingertip operated joysticks for individual unit lift/lower; cross-cut position. Electronic transport locks.

TRACTION, BRAKES & SPEED

TRACTION DRIVE	Hydrostatic, automatic on-demand cross-flow 4 wheel drive in forward and on demand in reverse
DECK DRIVE	Three dedicated cutter pumps to hydraulic motors with mechanical dual V belt final drive
HYDRAULIC SYSTEM	13.3 gal. (50.2L) capacity regulated with side by side cooler
SERVICE BRAKES	Dynamic braking through hydrostatic traction system
PARKING BRAKES	Zero-maintenance electro-hydraulic wet parking brakes
STEERING	Hydraulic power steering with adjustable tilt steering wheel
MOWING SPEED	10mph (16.4km/h) electronically adjustable
REVERSE SPEED	4mph (6.4kph)

WEIGHTS & DIMENSIONS

WEIGHT (excluding fuel)	4,429lbs (2,009kg), 4,808lbs (2,181kg) with cab
LENGTH	148" (3.76m) front deck down
OVERALL HEIGHT	83" ROPS up; 67" ROPS and decks down; 87" with cab (2.11m ROPS up; 1.70m ROPS and decks down; 2.2m with cab)
WHEELBASE	65" (1.65m)
TRANSPORT WIDTH	83" (2.1m)
WORKING WIDTH	137" (3.5m) with Mütthing® flail units down

WARRANTY

MOWER WARRANTY	2 Year
-----------------------	--------

ACCESSORIES

- Road light kit
- Canopy/sunshade
- Climate controlled cab
- Cab accessories - road light kit, Rear wiper kit



For information and support:

www.jacobsen.com / +44 (0) 1473 270 000 / +1-888-438-3946

